

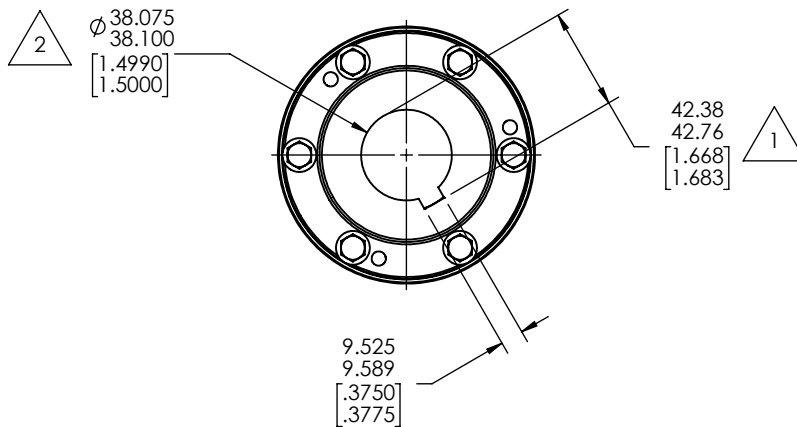
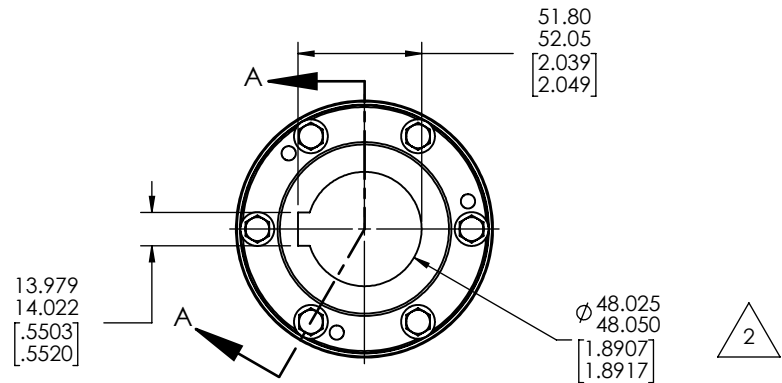
2 SETSCREWS M10X1.5  
1 OVER KEYWAY AND 1 @ 90  
AT 0.590 [14.99] AWAY FROM  
HUB BARREL END

2 SETSCREWS 5/16-24 NF  
1 OVER KEYWAY AND 1 @ 90  
AT 0.590 [14.99] AWAY FROM  
HUB BARREL END

Reference DWG

- A. TORSIONAL DATA (CALC.)  
WT = 5.4 kg [ 11.9 lbs]  
WR<sup>2</sup> = 7667.6 kg-mm<sup>2</sup> [26.2 lbs-in<sup>2</sup>]  
Kt = 4.92E<sup>4</sup> Nm/rad [4.36E<sup>5</sup> in-lbs/rad]  
(BASED ON 1/3 SHAFT PENETRATION  
FACTOR IN BOTH HUBS)
- B. COUPLING TORQUE RATINGS  
MAXIMUM CONTINUOUS = 554 Nm [4900 in-lbs]  
PEAK OVERLOAD = 1108 Nm [9800 in-lbs]
- C. OPERATING DATA  
POWER = 22.4 kW [30 HP]  
SPEED = 1475 RPM  
TORQUE = 145.5 Nm [1286 in-lbs]  
SERVICE FACTOR = 3.82
- D. CAUTION NOTE  
FLEX JOINT LOCKNUTS HAVE BEEN FACTORY  
TIGHTENED AND ARE NOT TO BE DISTURBED  
WHEN ASSEMBLING OR DISASSEMBLING  
ON EQUIPMENT.
- E. ORDER INFORMATION DATA  
P.O. NO.: 13861 LINE ITEM: 1  
CUSTOMER: JS RESOURCES INC.
- F. CUSTOMER NOTES  
REF NO.: HMDK-19-03

SECTION A-A



CERTIFIED  
AS - BUILT  
RCC REVAMP 2020 PROJECT

CERTIFIED FOR CUSTOMER APPROVAL		
CUSTOMER P.O. #:	13861	
REXNORD ORDER #:	1340704-10	
REV. #:	PER: RAM	DATE: SEP-03-19
PLEASE REVIEW THIS DRAWING AND RETURN		
APPROVED: ( )	JAS DRAWN	( ) JAS MARKED
NAME:	DATE:	

ITEM	PART NO	DESCRIPTION	QTY	MATERIAL	COMMENTS
9	10000151	CAPSCREW	12	CLASS 10.9	
8	10000182	LOCKNUT	12	CLASS 10	
7	10000212-01	OVERLOAD BUSHING	12	AISI 4140	
6	10000122	BOLT	12	CLASS 12.9	
5	10001132	ADAPTER	2	AISI 1146 OR 1141 OR 1045	
4	10000092	DISC PACK	2	301 STAINLESS STEEL	
3	10000876	CENTERMEMBER	1	AISI 1146 OR 1141 OR 1045	
2	77413-01	HUB	1	AISI 1146 OR 1141 OR 1045	
1	77413-01	HUB	1	AISI 1146 OR 1141 OR 1045	

REVISIONS		THIS DOCUMENT CONTAINS CONFIDENTIAL/PROPRIETARY INFORMATION OF REXNORD INDUSTRIES, LLC. NEITHER RECEIPT NOR POSSESSION THEREOF CONFERS ANY OWNERSHIP INTEREST IN RIGHT TO REPRODUCE OR USE, OR DISCLOSE IN WHOLE OR IN PART, ANY SUCH INFORMATION WITHOUT WRITTEN AUTHORIZATION FROM REXNORD INDUSTRIES, LLC. IT IS SUBJECT TO RETURN UPON DEMAND. THESE COMMODITIES, TECHNOLOGY, OR SOFTWARE ARE SUBJECT TO THE UNITED STATES EXPORT REGULATIONS. DIVERSION CONTRARY TO U.S. LAW AND OTHER RELEVANT EXPORT CONTROLS IS PROHIBITED.	 COUPLING GROUP WWW.REXNORD.COM THOMAS Flexible Couplings	
			DR. ADI      07/23/2019 CHK. ADI      07/23/2019	DRAWING NO. S00015923
	mm [INCH]	COUPLING ASSEMBLY 0826 XTSR 71 STANDARD	SAP MTL: 91040713 ORDER NO. 1340704-10	SHEET 1 OF 1